

Rhenocoll ColorFlakes - Modern Floor

Art. No.: A 5193

Application areas: Interior modern floor coating. Thick film, joint-free floor coating for industrial and commercial areas such as garages, cellar rooms, clean rooms and warehouses. Scatter flakes onto the wet varnish surface and re-coat when dry with a clear varnish. Provides a modern, highly abrasion resistant surface. For professional use.

Available colors for Color Flakes:



RHE0060
champagne-rosé
fine



RHE0061
red-yellow
fine



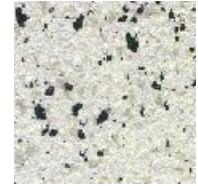
RHE0062
green-yellow
fine



RHE0063
gray-black
fine



RHE0064
black-gray
fine



RHE0065
gray-black
large



RHE0066
champagne-beige
fine



RHE0067
yellow-black
fine



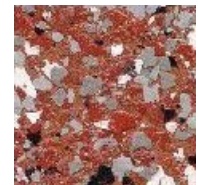
RHE0068
yellow-black
large



RHE0069
gray-blue
large



RHE0070
gray-red
large



RHE0071
red-gray
large

Modern Floor surface: The making of a modern floor surface is done in several steps. First, the surface needs to be primed followed by a finishing layer. Afterwards, scatter the desired amount of flakes onto the wet surface. When this coat is dry, remove any non-sticking flakes and recoat with a clear varnish.

Pretreatment: The substrate must be sustainable, clean, dry and free of separative substances such as oil, grease and wax. Remove old coatings with bad adhesion. Remove dust. Observe DIN 13813.

Preparation of the coating with Rhenopox EB 02.1 (2K Epoxi Boden)

Mix 5 parts by weight (kg) of component A + 1 part by weight (kg) of component B. Both packages form one unit. Stir component A well, add component B while stirring and mix thoroughly for 2-3 minutes at 300-400 rpm with stirring machine. Fill the mixed material into a clean container to avoid residue of unmixed components. Stir again briefly with the stirring machine. Mixture must be absolutely homogenous! **This mixture cannot be diluted with water.** Do not mix with other materials. Leave to rest for a few minutes after mixing the two components.

Processing as primer:

Mix

Rhenopox EB 02.1 (component A) 5 parts by weight and
Rhenopox EH 11.1-H (component B) 1 part by weight.

Processing as intermediate coat:

Mix

Rhenopox EB 02.1 (component A) 5 parts by weight and
Rhenopox EH 11.1-H (component B) 1 part by weight.

Sprinkling of the ColorFlakes: As a decorative effect of the surface, the Color Flakes are being sprinkled on to the wet coat. A top-coat varnish must be applied.
Consumption: approx. 50- 500 g/m².

Top-coat of the surface: The entire surface is being top-coated with the clear varnish. Thus, an additional adhesion between the Color Flakes and the intermediate coating is being obtained. The clear varnish is being applied after one day at the earliest, since the decorative flakes cannot be strained. Use Rhenopox EB-KL 09.1 Klarlack, clear varnish (mixed with hardener Rhenopox EH 12.1-LH)(150 g/m² top-coated, with roller).

Preparation of the material Rhenopox EB-KL 09.1 Klarlack (clear varnish):

Mix 2 parts by weight (kg) of component A + 1 part by weight (kg) of component B. Both packages form one unit. Stir component A well, add component B while stirring and mix thoroughly for 2-3 minutes at 300-400 rpm with stirring machine. Fill the mixed material into a clean container to avoid residue of unmixed components. Stir again briefly with the stirring machine. Mixture must be absolutely homogenous! This mixture cannot be diluted with water. Do not mix with other materials. Leave to rest for a few minutes after mixing the two components.

Storage: Store in a dry place.

Labeling: No labeling required.

Safety advice: During processing, common protection measures and regulations according to the authorized trade association must be observed. Safety-relevant data and instructions regarding disposal can be found in the safety data sheet.

Supply units Color Flakes:

20 kg hobbock

Service:

Our service team for application technology is available to you at any time without obligation.

Phone: ++49 (0)6384 99 38 - 0
Fax: ++49 (0)6384 99 38 - 112
Email: info@rhenocoll.de

The information given within is without obligation and is based on practical experience as well as on experiments which we have carried out and are not attribute guaranties in the sense of the newest BGH legal requirements. We recommend that in any case users carry out their own tests since we have no influence over the large diversity of materials and their processing. No liability for the manufacturer can be derived from the contents of this data sheet. Statements going beyond or deviating from the contents of this data sheet require the written confirmation of the company headquarters. Our General Terms & Conditions apply in any case. With the release of this Technical Data Sheet all previous versions become obsolete.